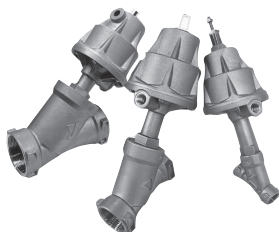


ASV-1000 series

■ Features

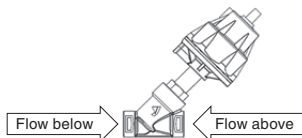
1. The robust design ensures outstanding durability and excellent product life.
2. The optimized flow path configuration provides high flow capacity and low pressure loss.
3. Suitable for wide range of fluids and applications.



■ Specifications

Model	ASV-1000	ASV-1000-R	ASV-1000-C
Application	Steam, air, cold and hot water, oil (600cSt or less), other gases*2	Steam, air, other gases*2	Steam, air, cold and hot water, oil (600cSt or less), other gases*2
Flow direction*1	Flow below	Flow above	Flow below
Nominal size	15A-50A		
Maximum working pressure	15A: 1.5MPa 20A: 1.5MPa 25A: 0.9MPa 32A: 0.9MPa 40A: 0.6MPa 50A: 0.3MPa	15A: 1.5MPa 20A: 1.5MPa 25A: 1.5MPa 32A: 1.2MPa 40A: 1.0MPa 50A: 1.0MPa	15A: 1.5MPa 20A: 1.5MPa 25A: 1.5MPa 32A: 1.2MPa 40A: 1.0MPa 50A: 1.0MPa
Pilot air pressure *3	15A-25A: 0.35-1.0MPa 32A-50A: 0.55-1.0MPa	Refer to the chart below (Maximum pressure: 1.0MPa)	Refer to the chart below (Maximum pressure: 1.0MPa)
Minimum working differential Pressure	0MPa (Outlet pressure is equal to or less than inlet pressure)		
Working temperature range	-30-200°C (no freezing condition)		
Ambient temperature range	-15-60°C		
Material	Body	Stainless steel	
	Valve disc	PTFE	
	Actuator	Aluminum	
Installation posture	Any direction is possible		
Connection	JIS Rc or NPT screwed		
Pilot port connection	G1/4		
Operation	Normally close		Normally open

*1 Flow direction



Flow below: ASV-1000, 1000-C

Suppresses water hammer with the valve's closing direction against the fluid flow.

Flow above: ASV-1000-R

Operates with lower pilot air pressure than ASV-1000 because the fluid flow assists the valve's closing.

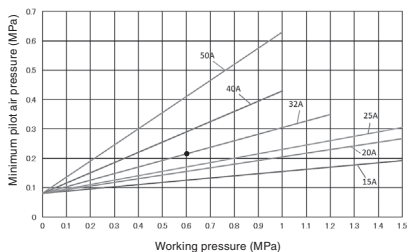
Do not use ASV-1000-R for liquid because it may cause water hammer.

*2 Please contact us for use for flammable gas.

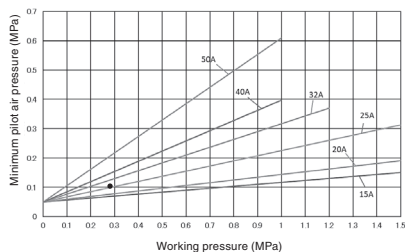
*3 Pilot air pressure: Compressed air pressure supplied inside the actuator

Minimum pilot air pressure - Working pressure Chart

ASV-1000-R



ASV-1000-C

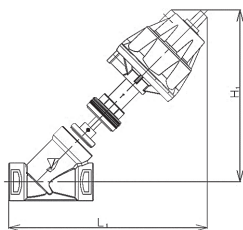


(EXAMPLE)

- ASV-1000-R: When the working pressure is 0.6 MPa for nominal size 32A, pilot air pressure of 0.22 MPa or higher is required for the valve disc to open.
- ASV-1000-C: When the working pressure is 0.3 MPa for nominal size 25A, pilot air pressure of 0.1 MPa or more is required for the valve disc to close.

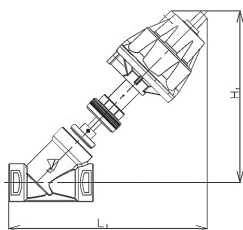
Dimensions (mm) and Weights (kg)

ASV-1000-R



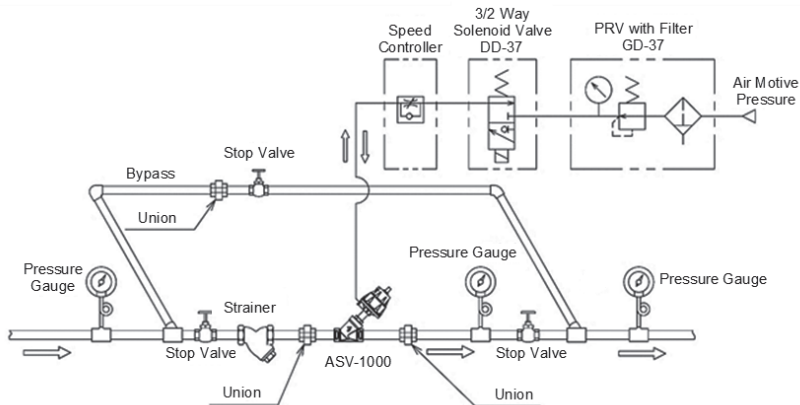
Nominal Size	d	L	A	H	Weight
15A	Rc 1/2	65	192	170	1.4
20A	Rc 3/4	75	200	174	1.6
25A	Rc 1	90	202	175	1.8
32A	Rc 1 1/4	110	217	183	2.2
40A	Rc 1 1/2	120	218	187	2.5
50A	Rc 2	150	228	185	3.0

ASV-1000-C



Nominal Size	d	L	A	H	Weight
15A	Rc 1/2	65	190	170	1.6
20A	Rc 3/4	75	195	174	1.8
25A	Rc 1	90	200	175	2.0
32A	Rc 1 1/4	110	214	183	2.4
40A	Rc 1 1/2	120	215	187	2.7
50A	Rc 2	150	224	185	3.2

■ Installation example



■ Option

Stroke limiter

Max. flow rate and min. flow rate (not fully closed) can be adjusted.

* This option is only for ASV-1000 and ASV-1000-R.

